



ELEVATE DENTISTRY

# YOUR COMPLETE GUIDE TO QUALITY PRODUCTS

FOSHAN DENTREES MEDICAL EQUIPMENT CO.,LTD.

Talk about your needs!

E - M a i l : eunice@dentrees.com

Telphone : 0086.135.35.708.761

Address : Room 325, No. 5 Baini Road, Chancheng District, Foshan city, 528051,China



@dentrees.com

@euniceou6218

@euniceou99



"Your Gateway to Cost-Effective Dental Sourcing Solutions and Insider Secrets!"

# DENTREES



## What We Do (Service)

- Any help you need in China
  - CUSTOMIZED Dental Product Solutions
    - Identify your ideal supplier and making price negotiations
    - Customize packaging/labels
  - Complimentary Warehousing Service and Shipment Arrange
  - Product Compliance and Testing:
    - Travel to vendors and manufactures when needed to negotiate cost, quality of the equipment and other items pertinent to the satisfaction of the orders prior to shipping
  - Dental Chair Technical Support
  - Product Development and Update the Industry Information

## Why Choose Us

We do not prescribe to a one-size-fits-all approach but rather in close collaboration determine the correct strategic procurement strategy for each of our clients. Together we choose the right market through analyzing products and materials, country capacity, and raw material origin.

9 years of experience in dental field export trading.

Establish a complete supply chain after visiting 40+ suppliers and will be lasting.

Small minimum order quantity, full range of categories

All-round assistance for your business/matter in China.



DENTREES is a sourcing company with 9 years of experience in dental field, which is committed to finding cost-effective dental treatment products and offering any assistance you need.



We represent your best interests by dealing with wide suppliers to ensure production consistently meets your cost, quality and delivery requirements. It carefully selects products through cooperates with quality suppliers and clinical experience.



With a network of quality suppliers and sourcing professionals, we enhance your overseas purchasing capability by helping you to reduce fixed costs and streamline your buying processes.



# IAMGING

## Endoscope Camera



21.5" Dental Endoscope



17" Wireless Dental Endoscope

## Buying Guidelines



Screen

**21.5-inch**    **17-inch**

The 21.5-inch screen has the same output ratio as the CT, and the image is not deformed; if you need to analyze CT films, give priority to the 21.5-inch

**Ultra-thin screen**    **Regular screen**    **Touch computer screen**



Transmission method

**VGA wired transmission**

VGA transmission is low cost but it should be fixed on the shelf.

**USB wireless transmission**

USB wireless is higher cost, but it's quick and stable transmission.

**WIFI transmission to monitor**

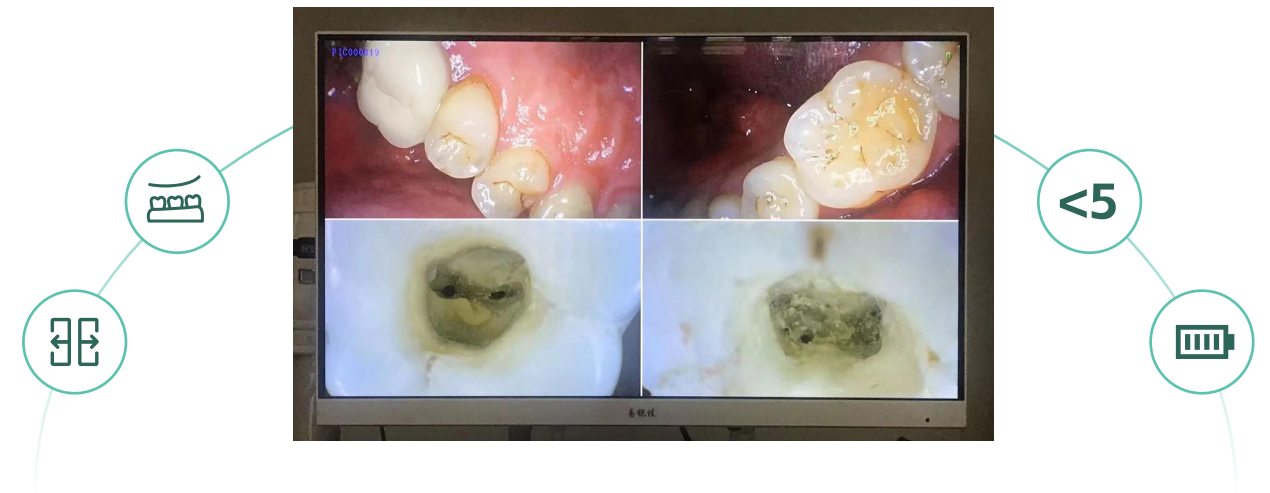
WIFI transmission has the disadvantage of transmission delay.



**Integral endoscope**    **Split endoscope**

Affected by the heat generated by the endoscope stopper, the integral endoscope generally has a shorter lifespan than the separate endoscope.

## Tips for Taking The Best Images



- Distinguish the front and back sides of the sheath, and wear the disposable sheath correctly
- The fixed focus distance of the endoscope lens is 5mm. Seeing 3 teeth on the screen is the best distance for shooting.
- For wireless endoscopes, the distance between the receiver and transmitter should be less than 5 meters.
- Keep the receiver and transmitter fully charged. Unstable voltage will affect the shooting effect

## Dental X-RAY



Hand-held X-ray Unit



One-handed X-ray Unit



Wall-mounted X-ray Unit



Floor-standing X-ray Unit

## Buying Guidelines



### Small X-ray Machine

For small dental clinics, you can give priority to purchasing a small X-ray machine, which has the advantages of small size, low cost, light weight, low X-ray dose, and easy operation.



### Handheld X-ray Machine

The handheld X-ray machine is equipped with a high-capacity battery, so it can be used without an external power source.



### Replaceable Battery

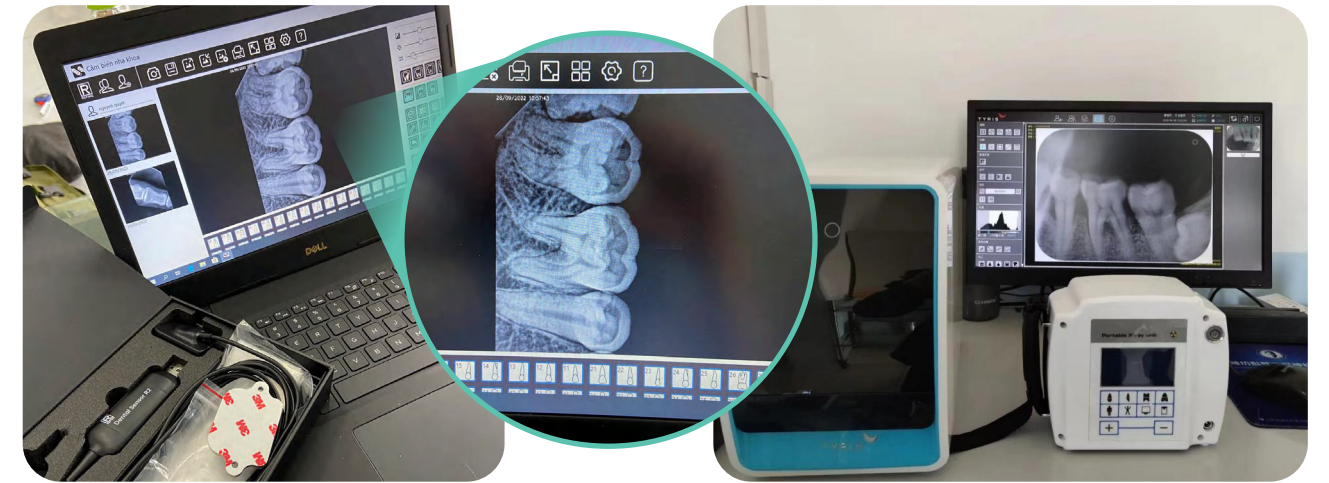
Replaceable battery is available for some model.



### Remote Control

Long-distance shooting can be easily completed through remote control.

## Tips on Getting Clear Picture



- Choose the imaging products recommended by the seller (such as sensor, imaging plates, and etc.). Different brands of them have different imaging effects.
- When developing photos, pay attention to the development time, developing fluid temperature, exposure time, etc.
- Stabilized voltage.

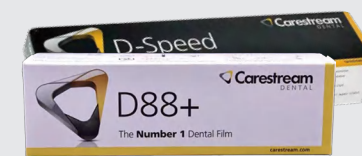
## Related Product



Sensor



Imaging Plates for Dental Radiography



Dental Film



X-ray Film Developing Liquid



## Dental Chair



### Knowledge

#### Dental Chair Styles

- Adult dental chair, implant dental chair, children's dental chair, and left-hand dental chair.

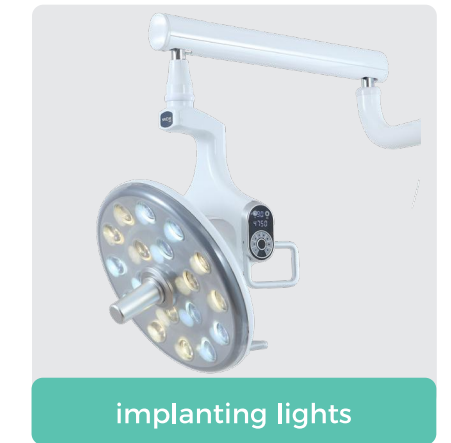
#### Points to Note

- After you understand the craftsmanship, structure, materials, and configuration of the dental chair, choose the dental chair that best suits you.
- In addition to basic functions, there are also automatic disinfection, anti-collision, first aid position, massage heating, automatic inspection functions, etc.
- Supplier's after-sales service must be efficient and timely.

If you are a technician, dental chair repair spare part look here, but not limited to this:



## Operating Lights & Examination Light



### What You Would Like to Know

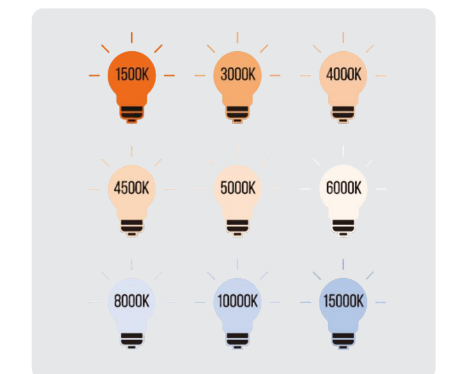


Get advanced dental light performance and unparalleled ergonomics for the dental team. See clearly and diagnose accurately in dental surgery.

- Dental lights have reflector lights, direct lights, and implanting lights.
- Due to structural limitations, reflector lights will have heavier shadows, followed by direct lights. Implant lights have many bulbs and have certain special designs, and its shadowless effect is the best.
- Key parameters:

Color temperature is 5500-6000k to ensure accurate color reproduction.

Color rendering index (CRI): The CRI of sunlight is 100, and the CRI should be > 90. The higher the color rendering index, the better the light can restore the original color of the object.



The light spots should be evenly distributed to minimize shadows and glare in the oral cavity.

- The lamp needs to be customized and matched based on three factors: the weight of the original dental chair lamp, the size of the lamp connector (diameter 22mm/26mm), and the wire plug.
- Choose pure aluminum die-cast lamp body, which is beautiful, wear-resistant and heat-dissipating
- It is recommended that each clinic should prepare an extra dental light to prevent business delays due to damage to the dental light.

# Dental Stools

## Buying Guidelines

### Various Dentist Stool

A wide variety of dental chairs can be customized according to your preferences.



**Backrest Design**

Some stools come with adjustable backrests, allowing you to customize the lumbar support based on your preferences.



**Armrest**

Some can be rotated 180° to provide firm support for the arms, relaxing the arm and shoulder muscles and reducing fatigue.



**Foot**

If your stool has a foot ring or footrest, make sure it is adjustable to accommodate different leg lengths and provide additional support during procedures.

Pay attention to the material. For example: zinc alloy die-casting, aluminum alloy, nylon plastic, etc. Different materials have different anti-rust and anti-corrosion properties.



**Seat Design**

**Height Adjustability**

**Can add the foot ring here**




**Wheel**

Ensure that the stool has smooth-rolling casters, enabling easy movement around the dental operatory without straining your back.



## Doctor's sitting posture during surgery.



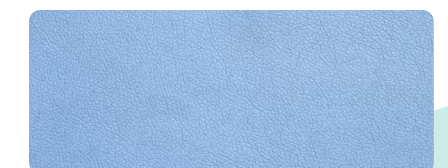
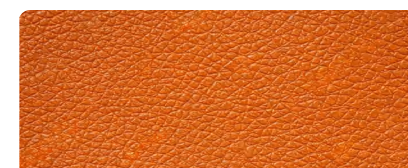
Choosing a comfortable dentist stool is important for maintaining good posture and preventing discomfort or pain during long hours of dental procedures.

### Cushion Material

PU leather is cost-effective and generally more resistant to wear, fading, and stains than genuine leather, but it's harder.

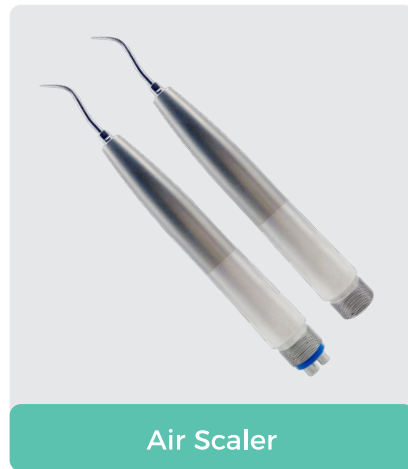
Mirco-Fiber Leather: Microfiber leather is generally more breathable than PU leather.

Genuine Leather: It's breathable, soft and comfortable, but it's high cost.

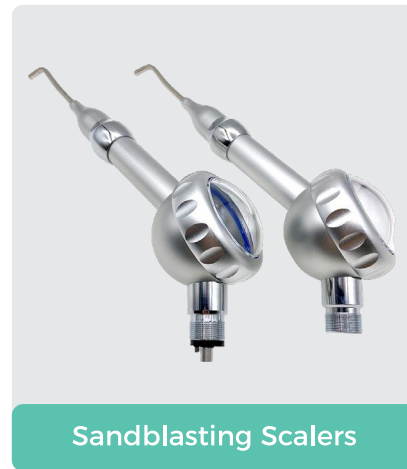




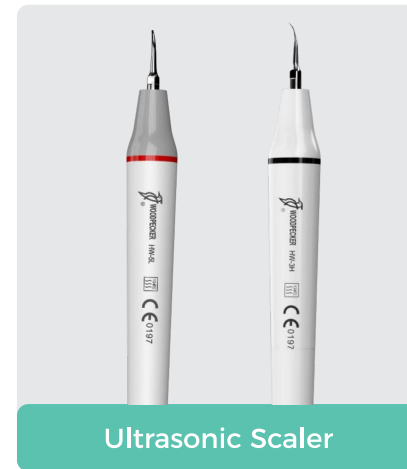
## Cleaning Equipment



Air Scaler



Sandblasting Scalers

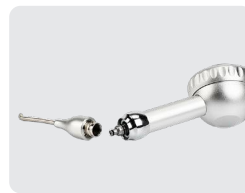


Ultrasonic Scaler



### Sandblasting Scaler

- The sterilizable handle is made of titanium, stainless steel and aluminum alloy. Choose the appropriate materials and craftsmanship according to your budget.
- Sandblasting head design
  - 1.Round head: sand is discharged first, and then water is discharged at 360°, which is not easy to block powder.
  - 2.Flat head
  - 3.Angle: 80°, 60°
- Connector: Quick connector, 2 holes, 4 holes.
- Removable nozzle for easy removal of blockage.
- The 360° sand outlet design is not easy to block powder.



#### Less Painfull

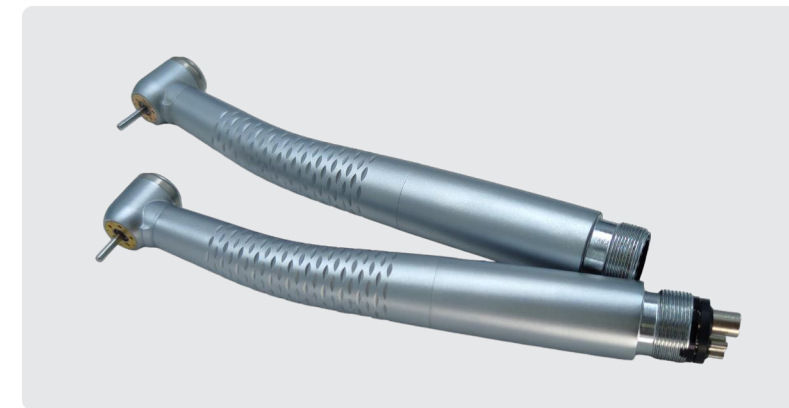
Air scalers are gentler and less painful than ultrasonic scalers; Can be directly connected to the dental handpiece connector for use



#### Deeply Clean the Teeth

Sandblasting scalers can clean teeth more deeply, using sand and salt to remove stains, tobacco stains, tea stains and other substances that are difficult to remove by regular washing, and also polishing action restores the smoothness of the tooth surface.

## Dental Handpiece



They look exactly the same, but they are different on the inside.

#### Bearing grade

- Grade A is the best quality.

#### Size of the head

- Large head, standard head, small head

#### Head angle

- 45°, 90°

#### Craftsmanship

- Integrated and welded. Welded is more competitive.

#### According to materials

- Stainless steel, titanium-plated, tungsten steel

#### Fiber Handpiece VS LED handpiece

- Different led bulbs have different shadowless effect.

#### Water spray method

- Multi-point water spray/single-point water spray

#### Needle removal method

- Push type and locking needle type

## Related Prodcut



Contra-Angles / Straight Head

Quick couplings & Motors

Oral Implant Handpiece

Disposable Dental Tubines

Alumina Sand Blasting

- Tungsten steel joint is not easy to explode. More durable than stainless steel.
- Can support quick connection
- Equipped with a safety switch to control whether to sandblast or not.

## Dental Treatment Machine



Oil-free Air Compressor



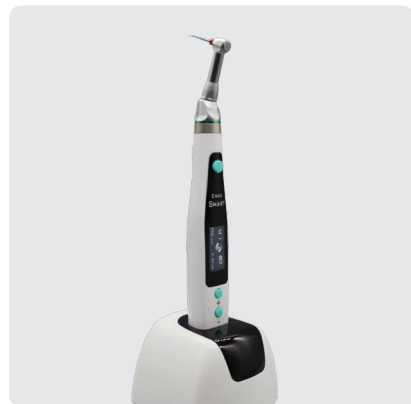
Suction Machine



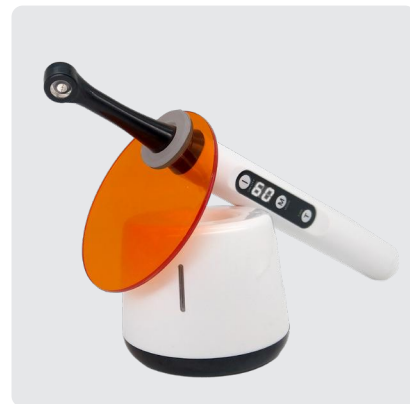
Implant Machine



Teeth Bleaching Equipment



Root Canal Equipment



Light Curing

## Dental Instrument Tool



Diamond Bur



Orthodontic Instrument



Endodontic Instrument



## Elevate Your Business with Us

To who it may concern,

Amidst the vast sea of opportunities, we are genuinely thankful to have crossed paths with you.

This introductory guide merely scratches the surface, revealing just the tip of the iceberg. Hidden within the depths of my thoughts are more insights that I am eager to share with you.

Whether you are venturing into importing Chinese products for the first time or facing challenges with existing suppliers, please reach out to us. We are committed to offering comprehensive product solutions tailored to address all your concerns.

For those with extensive experience in Chinese business, we invite you to stay tuned, as we will compile industry insights and look forward to engaging in further discussions with you.

In conclusion, our service is limitless, our products are optimized. Feel free to contact us to access the latest product information and embark on a seamless journey in dental procurement.

Best Regards

Foshan Dentrees Medical Equipment Co.,Ltd.